

Composer HE Download Instructions

To update the version of Composer HE running on your computer, simply follow these steps below.

1. Login to <https://customer.control4.com>. Download the new Composer HE that matches the software version of your controller. If you are unaware which software version your controller is running, you can find that information on the [Controller Registration page found in your customer account](#).*

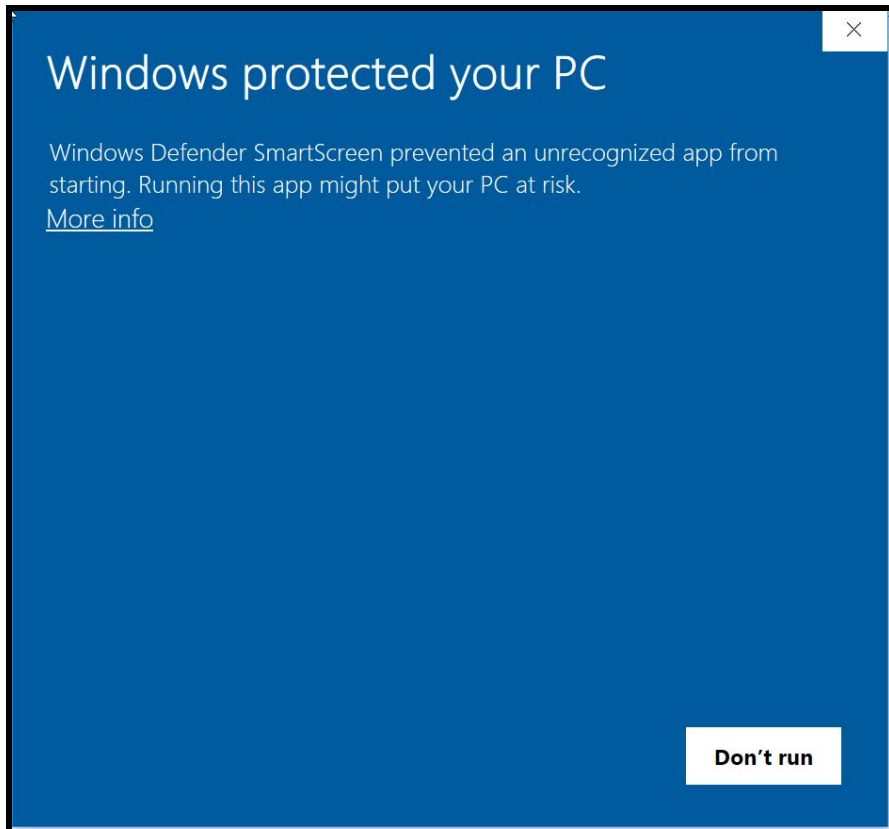
To download Composer HE, click on the appropriate link below for your software version, or go to the Downloads section in the [Customer Portal](#) located in the Software tile.

Composer HE Version	Download File
2.10.2	Download 2.10.2 Composer HE
2.10.1	Download 2.10.1 Composer HE
2.10.0	Download 2.10.0 Composer HE
2.9.1	Download 2.9.1 Composer HE
2.5.3	Download 2.5.3 Composer HE

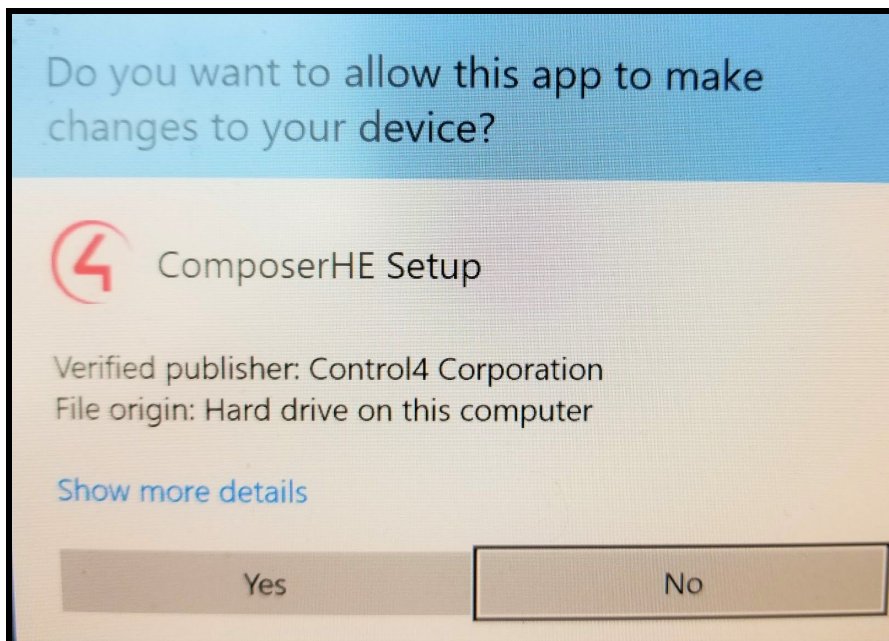
**If your current software version is before OS 2.5.3, you'll need to contact your dealer to update your system to at least OS 2.5.3 first, and then download the Composer HE version for OS 2.5.3.*

**If your current software version is between OS 2.6.0 to OS 2.9.0, you will need to contact your dealer to update your system to at least OS 2.9.1 first, and then download the Composer HE version that matches your new software version.*

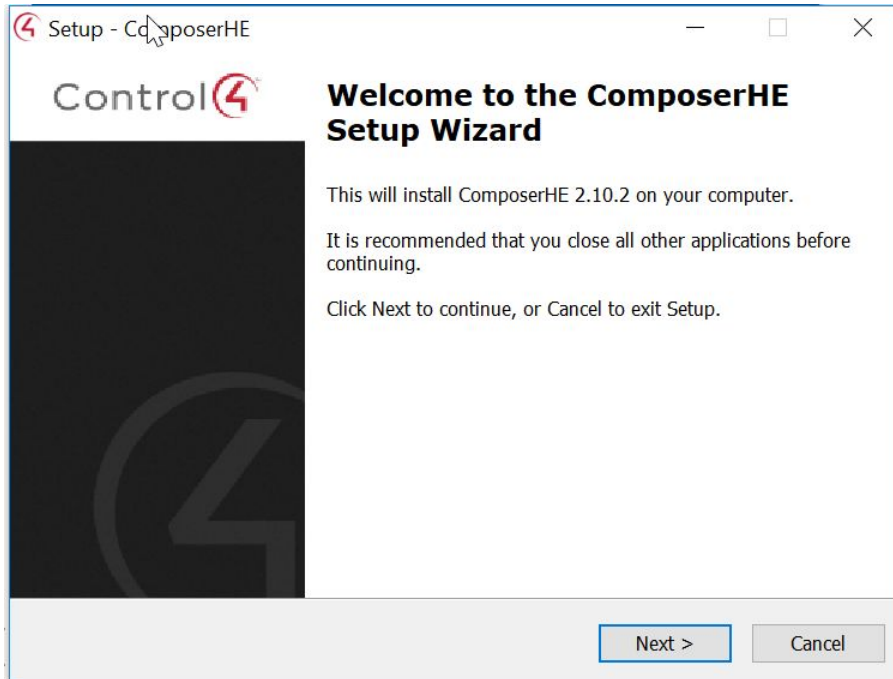
2. In the Composer HE section, click on the dropdown menu to select the applicable version.
3. Save the .exe file to your hard drive.
4. Open the folder and double click on the file.
5. You might get a "Windows protected your PC" message similar to the one below. If you do, click on the "More info" link and then click Run Anyway.



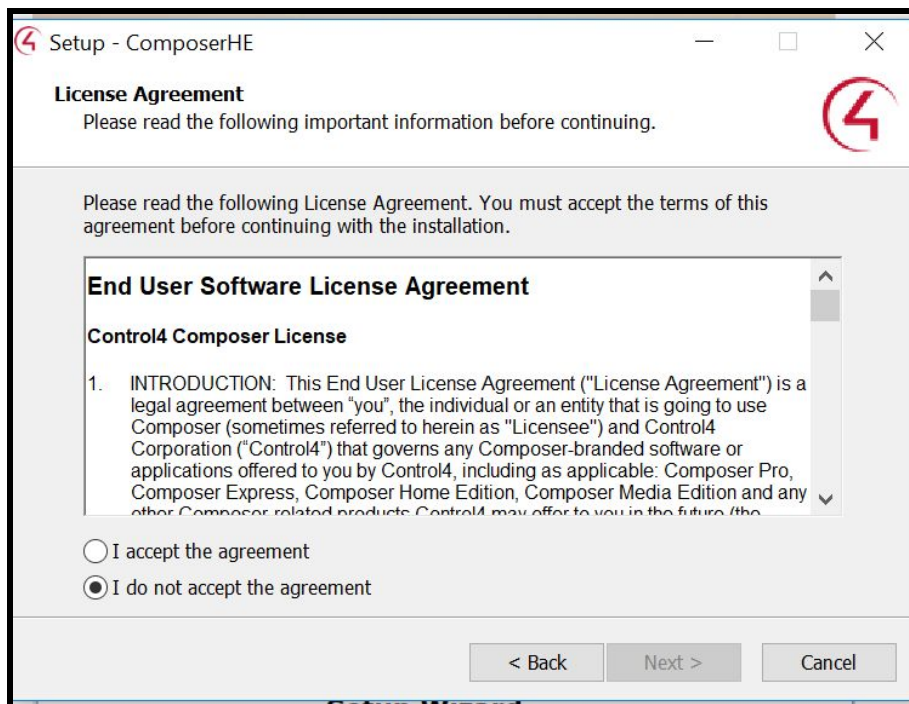
6. When asked "Do you want to allow this app to make changes to your device?" click on the Yes button.



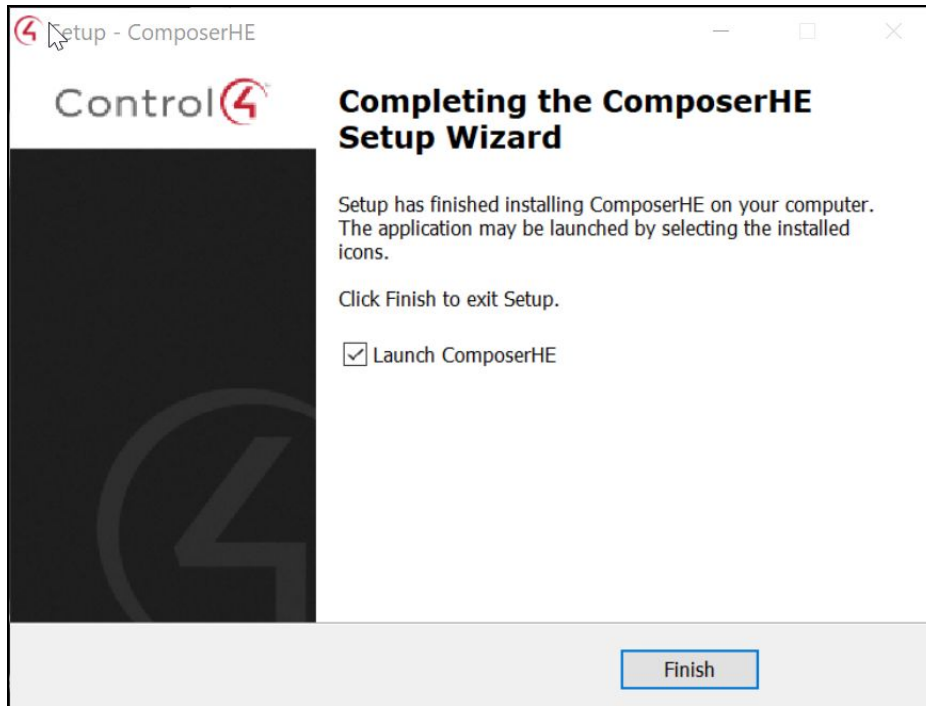
7. Click Next to start the Composer HE install.



8. Read and accept the End User License Agreement. Click Next to continue.



9. Select the folder where you want to install Composer HE, and click on Next.
10. Click the Next button in the "Select Additional Tasks" screen.
11. Click on the Install button to start the installation process.
12. When Composer HE setup is completed, uncheck the Launch Composer HE checkbox and click on the Finish button.



13. Next, we need to patch your system to allow the new Composer HE application to run.
[Download the Composer HE patch here and save to a folder on your hard drive.](#)
14. Open the folder and unzip the contents of the zip file.
15. Double click on the file called ComposerPatch2.
16. Your computer might ask you again "Do you want to allow this app to make changes to your device?" Click on the Yes button.
17. A windows command prompt opens up and the final patch process starts.
18. When the process is completed, the command prompt window will close automatically.
19. Your Composer HE is now fully updated and you can now open and use the application.